

# System Base Labs

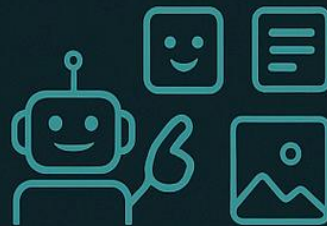
A Carbon-Neutral Company 

# SBL

Today's AI Startup. Engineering the Intelligence of Tomorrow



SEMANTIC  
INDEXING



ADAPTIVE  
RECOMMENDATIONS



MULTILINGUAL  
ENGINE



AI-ASSISTED  
CONTENT  
CREATION



VERSIONING &  
CURRICULUM  
SYNC

STORAGE

SEMANTIC  
PROCESSING

PERSONALIZATION

DELIVERY



AI-First  
Technology



Ethical AI



GPU Farms



Shankar AI



Blockchain +  
Biomedical



Education

## WHITEPAPER

### Content Libraries

A Unified, Intelligent Repository for Modern Learning  
System Base Labs – Education & Knowledge Division  
Powered by Shankar AI

### Executive Summary

Educational content today is scattered—across textbooks, PDFs, LMS platforms, videos, archives, teacher folders, and unstructured digital spaces.  
The result:

inconsistent quality

slow curriculum updates

inaccessible resources

broken learning continuity

System Base Labs solves this by building AI-driven content libraries—unified, intelligent, searchable knowledge repositories that store, organize, semantically index, and continuously optimize educational content across subjects, grades, languages, and formats.

Powered by Shankar AI + SBL Knowledge Graphs, these libraries transform static material into a dynamic, adaptive learning ecosystem.

Content becomes structured, alive, personalized, multilingual, and available instantly.

## 1. Introduction — The Content Problem in Education

Institutions face four major challenges:

### 1. Fragmentation

Content lives everywhere: PDF, PPT, YouTube, Google Drive, email chains.



AI-First  
Technology



Ethical AI



GPU Farms



Shankar AI



Blockchain +  
Biomedical



Education

## 2. Outdated Material

Curriculum updates lag behind industry and research.

## 3. Uneven Quality

Different teachers create variations of the same lesson.

## 4. Limited Accessibility

Students struggle to find the right content, at the right time, in the right format.

SBL Content Libraries solve all four.

## 2. What Is an SBL Content Library?

An SBL Content Library is a centralized, intelligent repository that contains all educational assets:

Lessons

Videos

Diagrams

Simulations

Assessments

Research material

Teacher notes

Multimedia explanations

Textbooks

External references



AI-First  
Technology



Ethical AI



GPU Farms



Shankar AI



Blockchain +  
Biomedical



Education

## Interactive modules

Every piece of content is semantically tagged using the SBL Knowledge Graph, enabling deep search, adaptive recommendations, and multilingual access.

This is not cloud storage.  
It is an intelligent content ecosystem.

## 3. Core Features of SBL Content Libraries

### 3.1 Semantic Content Indexing

Every file is transformed into a graph-linked asset.

The system identifies:

concepts

difficulty level

prerequisite concepts

learning style compatibility

language

cognitive complexity

age relevance

This enables concept-level search and retrieval, not keyword matching.

### 3.2 Adaptive Content Recommendations

Shankar AI recommends the right content to the right learner, based on:

current mastery



AI-First  
Technology



Ethical AI



GPU Farms



Shankar AI



Blockchain +  
Biomedical



Education

learning pace

academic goals

subject weaknesses

preferred learning style

teacher objectives

Every learner gets a personalized content feed.

### 3.3 Multilingual Content Conversion

All content can be:

translated

transcreated

voice-synthesized

culturally adapted

diagrammatically explained

Students receive content in their preferred language, with no meaning lost.

### 3.4 AI-Assisted Content Creation

Teachers can generate:

lesson summaries

quizzes

worksheets



AI-First  
Technology



Ethical AI



GPU Farms



Shankar AI



Blockchain +  
Biomedical



Education



practice problems

reading guides

visual explanations

alternative examples

...all powered by Shankar AI's context-aware generation engine.

### 3.5 Versioning & Curriculum Sync

The library maintains:

version history

curriculum alignment

change logs

update suggestions

deprecated content warnings

Institutions gain continuous curriculum modernization.

### 3.6 Multi-Format Support

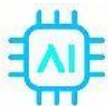
Supports:

Text

Audio

Video

AR/VR assets



AI-First  
Technology



Ethical AI



GPU Farms



Shankar AI



Blockchain +  
Biomedical



Education

GIF explanations

Simulations

3D models

Interactive maps

Slide decks

Whitepapers

Lab experiments

The library becomes a complete educational universe.

#### 4. How It Works — The SBL Architecture

The content library architecture is built on a four-layer system:

Layer 1: Unified Storage Layer

Cloud-native

Encrypted

High-performance

Multi-tenant

Offline support for low-connectivity regions

Layer 2: Semantic Processing Layer

Content extraction

Concept tagging



AI-First  
Technology



Ethical AI



GPU Farms



Shankar AI



Blockchain +  
Biomedical



Education

Relationship mapping

Metadata generation

Cognitive complexity scoring

This layer transforms raw content into intelligent content.

Layer 3: Shankar AI Personalization Layer

Recommendation engine

Learner modeling

Teacher preference modeling

Concept mastery alignment

Multilingual transformation

This layer makes learning adaptive and human-centered.

Layer 4: Delivery & Experience Layer

Used by:

AI Tutors

Virtual Classrooms

Event calendars

Teacher tools

Institution dashboards

Any SBL tool can instantly pull the perfect piece of content when needed.



AI-First  
Technology



Ethical AI



GPU Farms



Shankar AI



Blockchain +  
Biomedical



Education



## 5. Use Cases Across Education

### 1. K–12 Learning

Students receive personalized worksheets, video explanations, and step-by-step guidance.

### 2. Higher Education

Engineering, medical, and science programs use structured content maps.

### 3. Skill Development

Training organizations deliver dynamic, multilingual content.

### 4. Teacher Empowerment

Teachers quickly find high-quality teaching material for any topic.

### 5. Government Programs

National-level repositories serving millions of learners.

### 6. Corporate Learning

Content structured for roles, skill paths, and departments.

## 6. Competitive Advantages

### 1. Knowledge Graph–Driven Organization

Far more powerful than file-based LMS systems.

### 2. Full Multilingual Capability

A single content source → infinite languages.

### 3. Personalized Recommendations

Adaptive for each learner.

### 4. AI-Assisted Authoring Suite

Teachers create content in minutes.

### 5. Curriculum Fidelity & Governance



AI-First  
Technology



Ethical AI



GPU Farms



Shankar AI



Blockchain +  
Biomedical



Education

Ensures accuracy and consistency across institutions.

## 6. Seamless Integration

Works with AI Tutors, Virtual Classrooms, Teacher Tools, and Assessments.

## 7. Metrics to Track Impact

Institutions report improvements in:

Teacher productivity

Content accessibility

Student comprehension

Reduction in repeated content creation

Stronger curriculum alignment

Better student engagement

Faster onboarding for new teachers

Increased learning retention

## 8. Future Roadmap for Content Libraries

AI-generated micro-courses

Automated syllabus alignment

Content difficulty optimization

VR/AR content expansion



AI-First  
Technology



Ethical AI



GPU Farms



Shankar AI



Blockchain +  
Biomedical



Education

# System Base Labs

A Carbon-Neutral Company 

# SBL

**Today's AI Startup. Engineering the Intelligence of Tomorrow**

Predictive content analytics

Regional language-first content generation

## Conclusion

Content is the foundation of all learning.

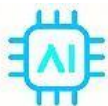
But raw content is not enough—students need intelligent, contextual, multilingual, adaptive content delivered at the right moment.

SBL Content Libraries transform static material into a living, evolving ecosystem—powered by semantic AI, aligned with pedagogy, accessible to everyone.

This is the future of educational content.

And SBL is building it.

**Dr.aleiman shankar rao**



AI-First  
Technology



Ethical AI



GPU Farms



Shankar AI



Blockchain +  
Biomedical



Education